



## Bury Health and Wellbeing Board

Title of the Report	Work plan and Terms of Reference for the Carbon Reduction and Climate Change Board– Priority 5 of the Health and Wellbeing Strategy
Date	17 <sup>th</sup> December 2015
Contact Officer	Sharon Hanbury, Neil Long and Lorraine Chamberlin
HWB Lead in this area	Pat Jones-Greenhalgh

### 1. Executive Summary

Is this report for?	Information <input type="checkbox"/>	Discussion <b>X</b>	Decision <input type="checkbox"/>
Why is this report being brought to the Board?	For the Health and Wellbeing board to note the content of the progress report.		
Please detail which, if any, of the Joint Health and Wellbeing Strategy priorities the report relates to. (See attached Strategy)  Living_well_in_Bury_Making_it_happen_to	Priority 5- Healthy Places		
Please detail which, if any, of the Joint Strategic Needs Assessment priorities the report relates to. (See attached JSNA)  Bury JSNA - Final for HWBB 3.pdf	The report links directly and indirectly to the JSNA.		
Key Actions for the Health and Wellbeing Board to address – what action is needed from the Board and its members? Please state recommendations for action.	For the Health and Wellbeing board to note the content of the progress report.		
What requirement is there for internal or external communication around this area?	N/A		
Assurance and tracking process – Has the report been considered at any other committee meeting of the Council/meeting of the CCG Board/other stakeholders....please provide details.	N/A		

## 2. Introduction / Background

It has been agreed that the Carbon Reduction & Climate Change Board AND Housing Strategy Programme Board jointly own and oversee the successful delivery Priority 5 - Healthy Places.

The Health and Wellbeing Board Terms of Reference state;

*"The Board will oversee and receive reports from a set of sub groups which will focus on the delivery of key targeted areas of work. The sub groups will report directly to the Health and Wellbeing Board. Provisions that apply to the HWB would also apply to any sub groups of the HWB."*

In order to ensure effective governance and accountability for delivering priority 5, it was agreed that:

- The minutes from the Carbon Reduction & Climate Change Board AND Housing Strategy Programme Board will be made available to the Health & Wellbeing Board and will be circulated for information on a regular basis. As the Health & Wellbeing Board is a public meeting and therefore all documents are available to the public.



Carbon Reduction  
and Climate Change E



HSPB Minutes 24  
June 2015 - Final for

- The Terms of Reference for the Carbon Reduction & Climate Change Board AND Housing Strategy Programme Board will include the statement that the boards will:

*'Oversee and monitor progress of Priority 5 of the Health & Wellbeing Strategy. The Carbon Reduction and Climate Change Board will report directly to the Health and Wellbeing Board. Minutes of the meetings of the Carbon Reduction and Climate Change Board will be circulated for information to all members of the Health and Wellbeing Board.'*



HSPB ToR.doc

### **NEED TOR FOR CLIMATE CHANGE**

- A detailed work plan would be created detailing key workstreams to deliver against each action of the priority and a set of local indicators developed to measure progress against the actions. Please see below for two workplans to cover the two key areas of work covered by this priority.

## Workplan for Action 1- Creating a clean and sustainable environment

MEASURES OF SUCCESS	Detailed Actions	Timescales	Responsible Officer and Responsible Group	Local Indicators, Benchmark and Data Source	Responsible Officer and Responsible Group	Update on progress
Improved air quality  Reduced carbon emissions  Sustainable Communities	Work with GM partners to produce a new GM Climate Change and Low Emissions Strategy. (Implementation Plan 2015- 2020)	January 2016	Lorraine Chamberlin and Chris Horth  Carbon Reduction and Climate Change Board	<ul style="list-style-type: none"> <li>• <b>Indicator:</b> Per capita emissions of CO2</li> <li>• <b>Benchmark:</b> GM Climate Change Strategy target – by 2020 a 48% reduction in Carbon emissions from 1990 baseline.</li> <li>• <b>Data Source:</b> PHOF 3.01</li> </ul> <p>Fraction of mortality attributable to particulate air pollution</p>	Helen Smith  Anna Barclay  Carbon Reduction – Virtual Network	<p>Draft GM Climate Change and Low Emissions Strategy. (Implementation Plan 2015-2020) is now out for consultation</p> <p>Per capita emissions of CO2 (within the scope of influence of local authorities).</p> <p>2005 – 6.2 tonnes</p> <p>2012 – 5.2 tonnes</p> <p>This shows a 16% reduction from baseline</p> <p>Per capita emissions of CO2 (all sources).</p> <p>2005 – 7.4 tonnes</p> <p>2012 – 6.3 tonnes</p> <p>This shows a 15% reduction from baseline</p> <p>Fraction of mortality attributable to particulate air pollution</p>

						2010 -5.5%  2013 – 4.9%  2013 average for North west was 4.6%  2013 average for GM was 5.0%.
	Produce Bury Climate Change Strategy	September 2016				Drawing up specification
	Engage public and third sector partners to gather information and share best practice regarding mitigating and adapting to climate change	September 2016	Chris Horth and Clinton Judge  Strategic Estates Group (SEG)	<ul style="list-style-type: none"> <li>• <b>Indicator:</b> Level 1 in the former NI 188 identified 5 levels of progress in adapting to climate change.</li> <li>• <b>Benchmark:</b> To progress upon a Level 1 achievement</li> <li>• <b>Data Source:</b> Contact with SEG</li> </ul>	Carbon Reduction – Virtual Network/GM Partners	SEG established with relevant contacts for NHS fire and Colleges. Fairfield Hospital have recently installed a new gas fired CHP and heat network. NHS colleagues shared information on combining new leisure centres with health care services to help encourage active lifestyles including walking and cycling

	Install Energy Efficiency Measures in Council Buildings	<p>REFIT Project – Summer 2016</p> <p>Salix Schools – Jan 2016</p> <p>Heat network Feasibility Study – April 2016</p> <p>Install LED streetlighting – December 2018</p>	<p>Alex Holland, Chris Horth and Paul Hewitt</p> <p>Carbon Reduction &amp; Climate Change Board</p>	<ul style="list-style-type: none"> <li>• <b>Indicator:</b> Carbon emissions resulting from council activity</li> <li>• <b>Benchmark:</b> A reduction in Co2 emissions from baseline of 29691 tonnes</li> <li>• <b>Data Source:</b> Annual Greenhouse Gas Report</li> </ul>	<p>Chris Horth</p> <p>Carbon Reduction – Virtual Network</p>	<p>REFIT project</p> <p>Preparing and checking the invitation to tender</p> <p>Salix in Schools</p> <p>5 schools have received energy audits currently following these up to see which works the schools would like to pursue.</p> <p>Heat network Feasibility</p> <p>Procurement exercise carried out with Tameside and GMCA – contract for study awarded to Ove Arup and Partners</p> <p>LED Streetlighting</p> <p>Salix interest free loan funding secured for £707,000 towards this project over the next 3 years. To the end of 2014/15 we have installed 3470 LEDs and aim to install another 2300 by the end of this financial year.</p> <p>Bury Council's CRC report 13617 tonnes 2014/15</p>
--	---	---	---	--	--	---

	Improve energy efficiency of residential properties in the borough			<ul style="list-style-type: none"> <li>• <b>Indicator:</b> Carbon reduction from residential properties as a result of council activity.</li> <li>• <b>Benchmark:</b> A reduction on the result from 2015 428kt CO<sub>2</sub></li> <li>• <b>Data Source:</b> HECA Report</li> </ul>	Sharon Hanbury  Carbon Reduction – Virtual Network	
	Lower emissions from transport			<ul style="list-style-type: none"> <li>• <b>Indicator:</b> Number of low emissions taxis in Bury</li> <li>• <b>Benchmark:</b> An increase on current figure</li> <li>• <b>Data Source:</b> Licensing</li> </ul>	Michael Bridge  Carbon Reduction – Virtual Network and /Licensing	We currently have 11 hybrid taxis
				<ul style="list-style-type: none"> <li>• <b>Indicator:</b> Usage of public electric vehicle charging points</li> <li>• <b>Benchmark:</b> Maintain/increase</li> </ul>		2014/15 – No of charging sessions = 1179  Energy used = 5493kWh  1/4/15 to 31/10/15 – number of charging sessions so far 1011

				charging sessions to signify an increase in the usage of electric vehicles  <ul style="list-style-type: none"> <li>• <b>Data Source:</b> 'Charge Your Car'</li> </ul>		Energy used 5010kWh. On target to exceed last year's usage
				<ul style="list-style-type: none"> <li>• <b>Indicator:</b> Cycling kms covered</li> <li>• <b>Benchmark:</b> Improved on 2013 figure - 2.75 million kms</li> <li>• <b>Data Source:</b> Transport for Greater Manchester (TFGM) – Bury figures</li> </ul>	Chris Horth  Carbon Reduction – Virtual Network	Cycling kms covered in 2014 is 3.01 million kms
				<ul style="list-style-type: none"> <li>• <b>Indicator:</b> Number of low emissions vehicles used by the council</li> <li>• <b>Benchmark:</b> An increase on total</li> <li>• <b>Data Source:</b> Council Transport</li> </ul>	Steve Fleming  Carbon Reduction – Virtual Network	2 vehicles i.e. a small tipper and a compact sweeper

Green spaces that are welcoming, safe and well maintained	Play area strategy – Refurbishment Programme	Refurbishment Programme 2015/16 and 2016/17 including Section 106 projects	Tom Buggie and Neil Long  Operations Management Group	<ul style="list-style-type: none"> <li>• <b>Indicator:</b> Number of play areas refurbished</li> <li>• <b>Benchmark:</b> Amount of play areas meeting European Standards</li> <li>• <b>Data Source:</b> Gathered from inspections</li> </ul>	Tom Buggie  Park Facilities Manager	
	General repairs & maintenance	Ongoing monitoring of standards	Kevin Dickinson and Mike Bent  Operations Management Group	<b>Measured by:</b> Grounds maintenance staff, self inspecting their work	Ken Brown	
	General grounds Maintenance	Ongoing monitoring of standards	Martin Dowding and Ken Brown  Operations Management Group	<b>Measured by:</b> 5% all work inspected per month in each district within the borough	Business Development Manager	
	Maintain Green Flag Standards	Ongoing – Annual Inspection of	Mike Bent	<ul style="list-style-type: none"> <li>• <b>Indicator:</b> The green Flag Standard itself</li> </ul>		



		parks including mystery shop	Operations Management Group	<ul style="list-style-type: none"> <li>• <b>Benchmark:</b> To maintain 12 Green Flag Parks  (12/12) 100%</li> <li>• <b>Data Source:</b> 'Keep Britain Tidy'</li> </ul>	Parks and Countryside Manager	
	In-bloom industries	Annual judging of Bury and Radcliffe In-Bloom campaign	Neil Long  Operations Management Group	<ul style="list-style-type: none"> <li>• <b>Measured by:</b>  Judging</li> <li>• <b>Benchmark:</b>  To achieve Gold for Bury and Silver for Radcliffe as well as winning NW Bloom and succeeding at national Britain in Bloom</li> </ul>	Neil Long and Martin Dowding	
	Environmental Quality Improvement	Ongoing monitoring of standards	Mick Morris  Operations Management Group	Target under development	Mick Morris	

	Move to 3 weekly collections	New collection service effective from 5 Oct 2014	Glenn Stuart  Recycling Operations Group, Recycling Awareness Team and Waste Enforcement Team	<ul style="list-style-type: none"> <li>• <b>Indicator:</b> Increase in tonnage of recycling collected and decrease in tonnage of residual waste collected.</li> <li>• <b>Benchmark:</b> 60% by March 2016</li> <li>• <b>Data Source:</b> Waste Management</li> </ul>	Neil Long and Glenn Stuart  Recycling Operations Group and WM-Recycling Communication Group	<p>Non-recyclable waste collections reduced to once every three weeks. Dry recycling collections provided more often from 4 weeks to 3 weeks and garden and food waste 2 weekly collections remaining unchanged.</p> <p>Bury was the first place in England to take the bold step in adopting 3 weekly rubbish collections.</p> <p>Through ongoing education and awareness we hope to be on track to achieve 60% by March 2016 and also save going on for £1 million per year.</p>
High levels of recycling	<b>Right stuff, Right bin (RSRB) Campaigns</b> in partnership with the Greater Manchester Waste Disposal Authority (GMWDA)	June 2015 to March 2016	Glenn Stuart/Jacqui Goggs/Wendy Wilson (GMWDA)  Recycling/Enforcement Awareness	<ul style="list-style-type: none"> <li>• <b>Indicator:</b> Increase recycling</li> <li>• <b>Benchmark:</b> By 3% equating to</li> </ul>	Glenn Stuart and Jacqui Goggs  Carbon Reduction and	

			Team/Recycling Comms Group/	<p>45 tonnes/year.</p> <ul style="list-style-type: none"> <li>• <b>Indicator:</b> Decrease tonnage of residual waste collected</li> <li>• <b>Benchmark:</b> By 3%.</li> <li>• <b>Data Source:</b> Waste Management</li> </ul>	Climate Change Board	
	Schools Recycling & Education Campaign	Jan 2014 to March 2016	<p>Glenn Stuart and Talat Afzal</p> <p>Recycling Operations Group and Recycling Comms Group</p>	<ul style="list-style-type: none"> <li>• <b>Indicator:</b> Achieve 100% dry recycling capture at all applicable schools.</li> <li>• <b>Indicator:</b> Achieve 100% food waste recycling in all applicable school kitchens.</li> <li>• <b>Indicator:</b> Achieve 40% of whole school food waste recycling in</li> </ul>	<p>Glenn Stuart/Talat Afzal</p> <p>Carbon Reduction and Climate Change Board</p>	

				applicable schools.		
	Food Waste Recycling/Brown bin Campaign	April 2015 – March 2016	Glenn Stuart/Joanne Hall  Recycling Awareness Team, Waste Enforcement Team and Recycling Comms Group	<ul style="list-style-type: none"> <li>• <b>Indicator:</b> Improve recycling rates</li> <li>• <b>Benchmark:</b> By 60% during 2016</li> </ul>	Glenn Stuart and Joanne Hall  Carbon Reduction and Climate Change Board	The aim of the campaign is to increase the number of people recycling food waste and overall increase the tonnage of food waste collected.
	Community Based Recycling Initiatives	Jan 2014 to March 2016	Glenn Stuart/ Recycling Awareness Team  Recycling Operations Group and Recycling Comms Group	<ul style="list-style-type: none"> <li>• <b>Indicator:</b> Improve recycling rates</li> <li>• <b>Benchmark:</b> By 60% during 2016</li> </ul>	Glenn Stuart  Carbon Reduction and Climate Change Board	Area Based campaigns that target certain areas of the borough.

	Waste Enforcement Initiative	Jan 2014 to March 2016	Glenn Stuart/Kim Griffiths  Recycling Operations Group and Recycling Comms Group	<ul style="list-style-type: none"> <li><b>Benchmark:</b> Work towards increasing recycling rates to 60% during 2016.</li> </ul>	Glenn Stuart/Kim Griffiths  Carbon Reduction and Climate Change Board	<p>Working throughout the borough to increase recycling rates, reduce contamination and issues relating to waste and misuse of bins.</p> <p>Specific action in hotspot low performing areas e.g. door knocking, targeted work with individual households, general inspections in areas and checking for contamination in bins and side waste.</p>

## **Workplan for Action 2- Ensure Suitable and Quality Housing**

<b>MEASURES OF SUCCESS</b>	<b>Detailed Actions</b>	<b>Timescales</b>	<b>Responsible Officer</b>	<b>Responsible group</b>	<b>Update on progress</b>
<b>Access to affordable and appropriate tenure housing</b>	Facilitate housing growth and investment to deliver housing strategy, broader Council priorities and GM strategies through partnership working, leadership, and maximising assets/resources.	Ongoing	Sharon Hanbury	Housing Growth and Development Group	
	Investigate opportunities for Six Town Housing to acquire and develop new properties to increase the number of affordable homes available.	Ongoing	Emma Richman	HOB	
	Tackle private sector empty properties, bringing properties back into use and minimizing negative impacts. Maximise funding opportunities and deliver targets.	Ongoing	Sharon Hanbury	HOB	
	Increased use of the private rented sector as an affordable housing option by increasing the number of accredited landlords, increasing number of properties available via bond scheme and improving tenancy sustainability.	Ongoing	Sharon Hanbury Karen Young	HOB	
	Make best use of affordable housing, including social housing, to meet housing need through for example the	March 15	Karen Young		

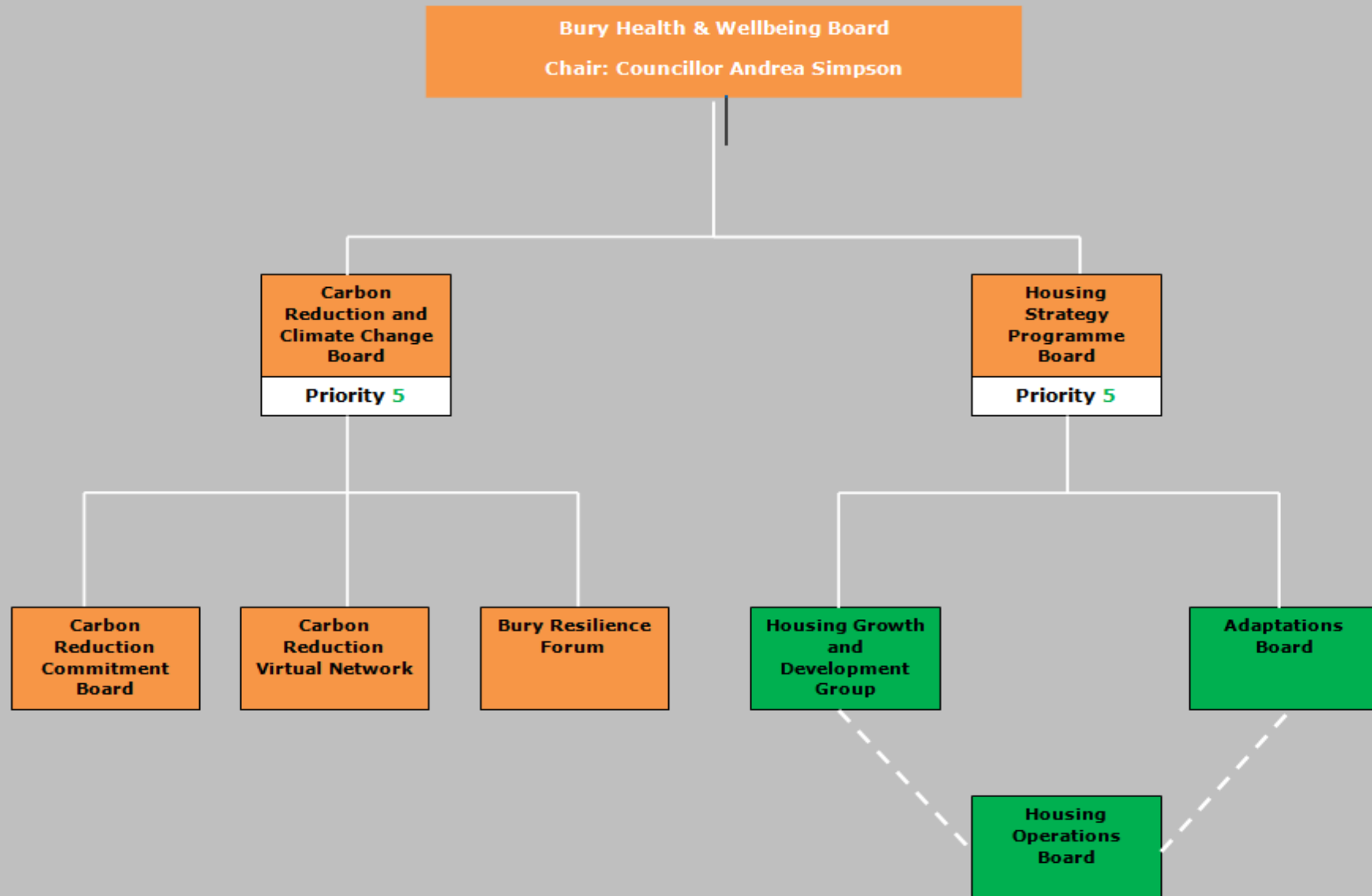
	Housing Allocation Policy and Nomination Agreements.		Sharon Hanbury		
	Deliver the capital programme to ensure Council and Six Town Housing properties meet the Decent Homes Standard and enhanced capital works where planned.	2015-2017	Emma Richman	HOB	
<b>Access to quality homes that meet people needs and secure their health and wellbeing</b>	Improve energy efficiency of properties cross tenure. Work in partnership, maximise funding and co-ordinate schemes.	Ongoing	Sharon Hanbury Emma Richman	HOB Carbon Reduction Board	
	Tackle fuel poverty through development and delivery of revised Action Plan, using partnerships and maximising resources.	Revised Action Plan signed up by partners February 2016	Sharon Hanbury Emma Richman	HOB	
	Continue to monitor, review and improve the adaptations service, ensuring delivery within and making best use of resources and taking into account wider strategic aspects eg the Care Act.	Ongoing	Sharon Hanbury	Adaptations Board.  HOB	

	Improve property management and standards in the private rented sector using a mixture of informal and informal approaches, to maximise the sector alongside other housing options.	Ongoing	Sharon Hanbury	HOB	
	Ensure appropriate linkages between housing, social care and health; develop housing 'offer' and develop and deliver appropriate activity.	Ongoing	Sharon Hanbury	HOB	
	Implement the new homeless strategy	March 2018	Karen Young		
<b>Reduced homelessness</b>	Implement Homelessness Strategy	March 2018	Karen Young	HOB	



<b>INDICATORS</b>	<b>Local Indicators</b>	<b>Benchmark</b>	<b>Data Source</b>	<b>Responsible Officer</b>	<b>Responsible Group</b>
Percentage of households in fuel Poverty	Percentage of Households in Fuel Poverty	10.1% of households in Fuel Poverty (8047 households out of an estimated 79749 households)  (Figures from 2013 spreadsheet updated by DECC in 2015)  (Compares to NW 10.9% and England 10.4%)	Department of Energy and Climate Change (DECC) <a href="https://www.gov.uk/government/statistics/2013-sub-regional-fuel-poverty-data-low-income-high-costs-indicator">https://www.gov.uk/government/statistics/2013-sub-regional-fuel-poverty-data-low-income-high-costs-indicator</a>	Sharon Hanbury	HOB  Carbon Reduction Board
Statutory homelessness - homelessness acceptances  Statutory homelessness - households in temporary accommodation	Number of homeless acceptances  Number of Homeless Preventions	No benchmark currently in place	P1E Government Source	Donna Moore/ Karen Young	HOB
	% of none decent homes  Energy efficiency		Lifespan – Asset Management System  Lifespan – Asset Management System	Paul Webb  Paul Webb	HOB

# Structure & Governance



- Exception reports to the Health & Wellbeing Board would be submitted as and when required.

### **No exemption reports have been submitted**

### **3. Key issues for the Board to Consider**

Key issues for the board to consider are:

- The content of the workplans provided
- The governance structure of The Carbon Reduction & Climate Change Board AND Housing Strategy & Programme Board provided
- The Local Performance Indicators identified by The Carbon Reduction & Climate Change Board AND Housing Strategy & Programme Board

### **4. Recommendations for action**

For the Health and Wellbeing board to note the content of the progress report.

### **5. Financial and legal implications (if any)**

**If necessary please seek advice from the Council Monitoring Officer Jayne Hammond ([J.M.Hammond@bury.gov.uk](mailto:J.M.Hammond@bury.gov.uk)) or Section 151 Officer Steve Kenyon ([S.Kenyon@bury.gov.uk](mailto:S.Kenyon@bury.gov.uk) ).**

No financial or legal implications.

### **6. Equality/Diversity Implications. Please attach the completed Equality and Analysis Form.**

*Please remember that all officers are responsible for ensuring that an appropriate equality analysis is carried out on any new or changed policy, procedure or working practice. An equality analysis has been carried out on the Health and Wellbeing Strategy, but it is likely that individual initiatives will require a more detailed and specific equality analysis. Should you have any queries, please contact Helen Smith to discuss.*

CONTACT DETAILS:

**Contact Officer:** Sharon Hanbury, Neil Long & Lorraine Chamberlin

**E-mail address:**

[S.Hanbury@bury.gov.uk](mailto:S.Hanbury@bury.gov.uk)

[N.Long@bury.gov.uk](mailto:N.Long@bury.gov.uk)

[L.Chamberlin@bury.gov.uk](mailto:L.Chamberlin@bury.gov.uk)

**Date:** 17<sup>th</sup> December 2015